

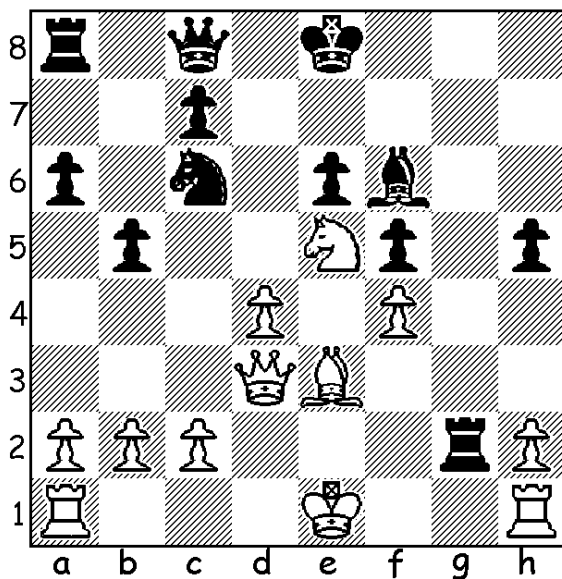
Excerpts from Beginner Chess Tactics for Kids

Find the Hanging Pieces

In this chapter, you'll be looking for a hanging piece, which is any piece that

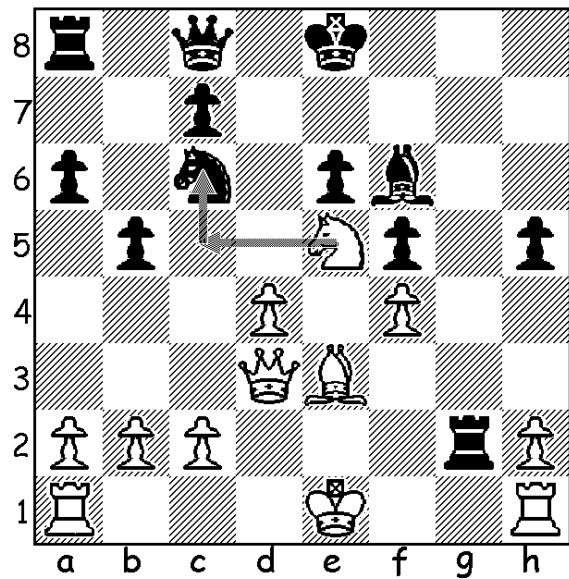
- isn't protected and can be captured freely, or
- can be captured freely because the piece that's protecting it is pinned and can't move, or
- can be captured because it is being attacked by more pieces than your opponent has defending it.

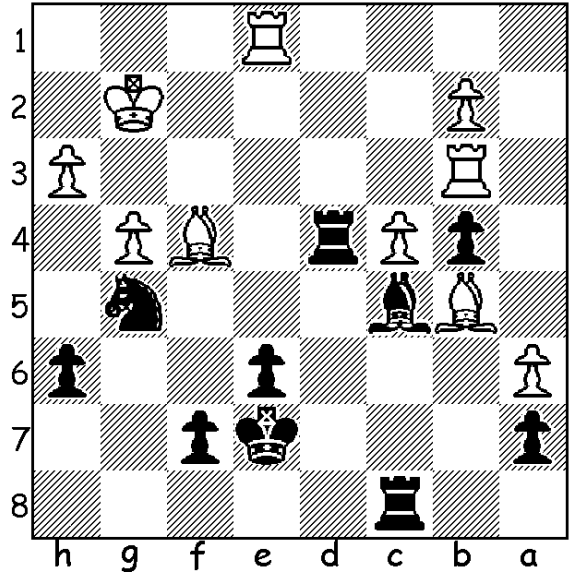
SAMPLE PUZZLE



White to play

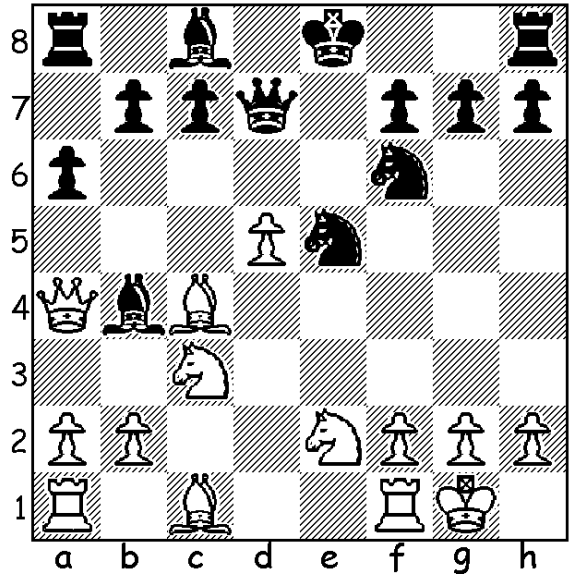
SAMPLE PUZZLE ANSWER





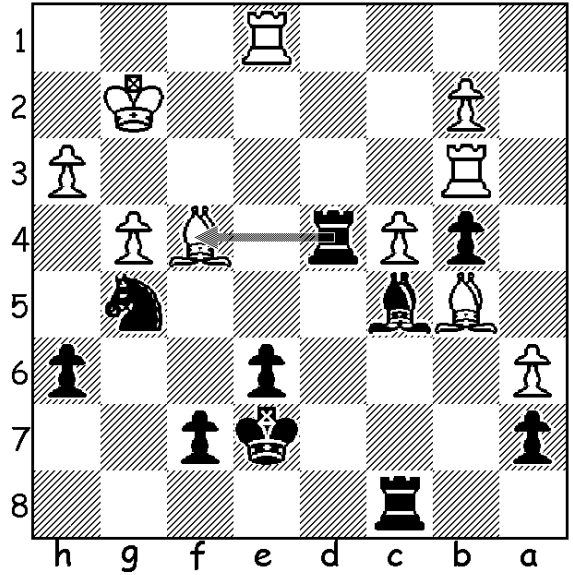
Puzzle #1 Black to play

Write your answer _____



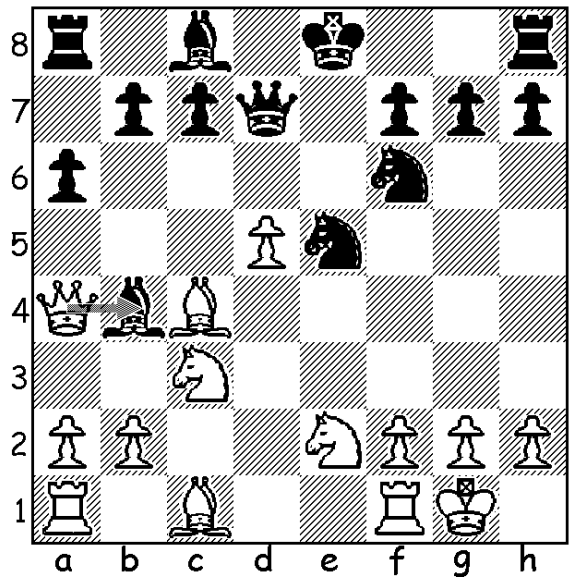
Puzzle #2 White to play

Write your answer _____



Answer to Puzzle #1

Correct 1 point Incorrect 0 points



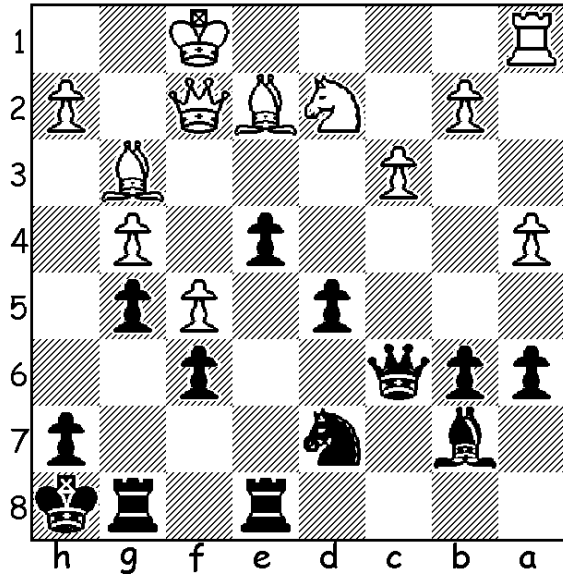
Answer to Puzzle #2

Correct 1 point Incorrect 0 points

Find the Forks

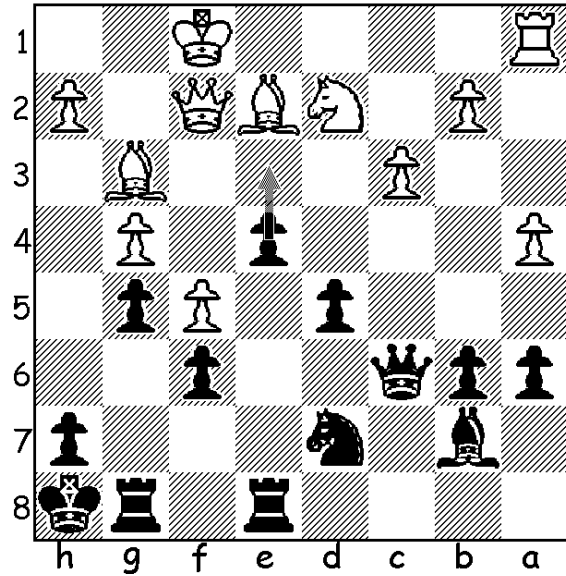
In this chapter, you'll need to find the move in each of the puzzles that will result in attacking two pieces to create a material advantage.

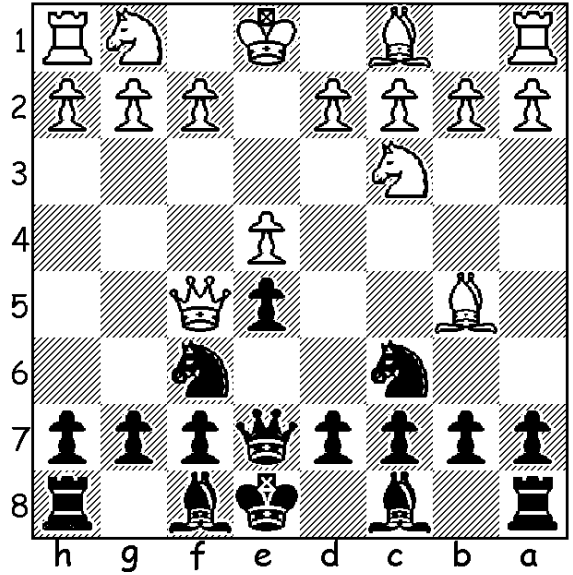
SAMPLE PUZZLE



Black to Play

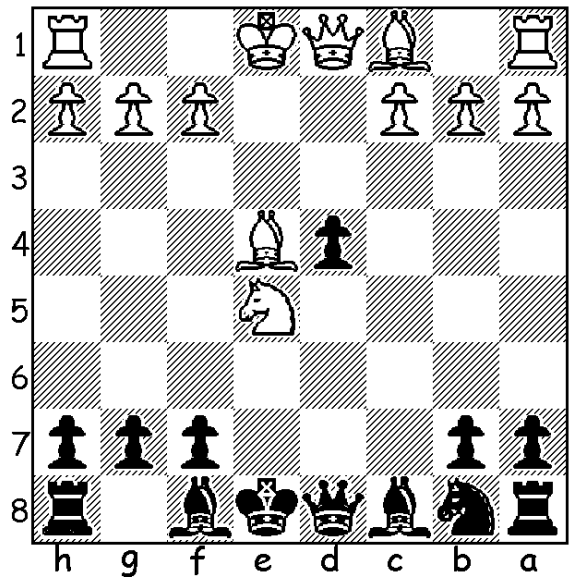
SAMPLE PUZZLE ANSWER





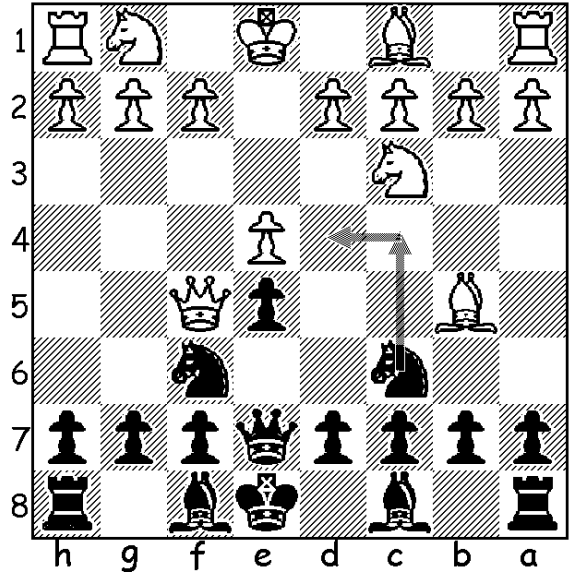
Puzzle #7 Black to play

Write your answer _____



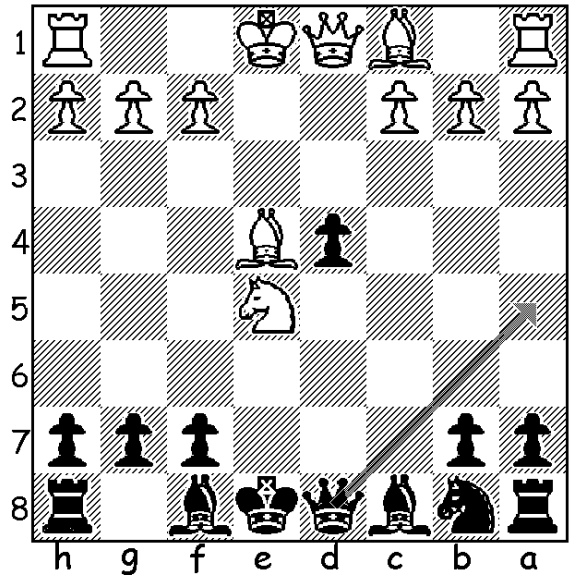
Puzzle #8 Black to play

Write your answer _____



Answer to Puzzle #7

Correct 1 point Incorrect 0 points



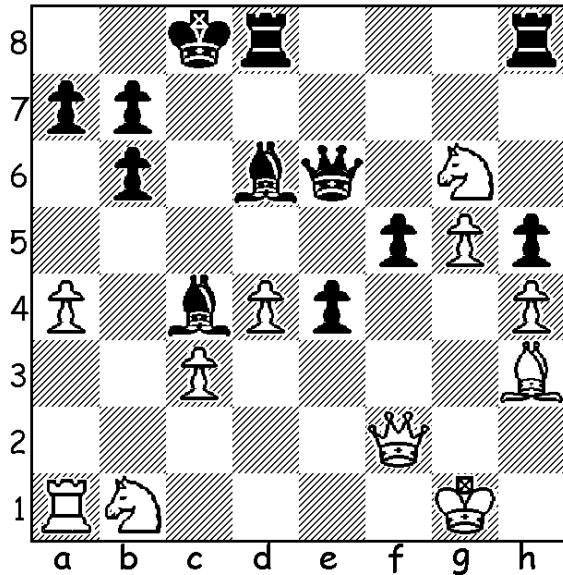
Answer to Puzzle #8

Correct 1 point Incorrect 0 points

Find the Pins

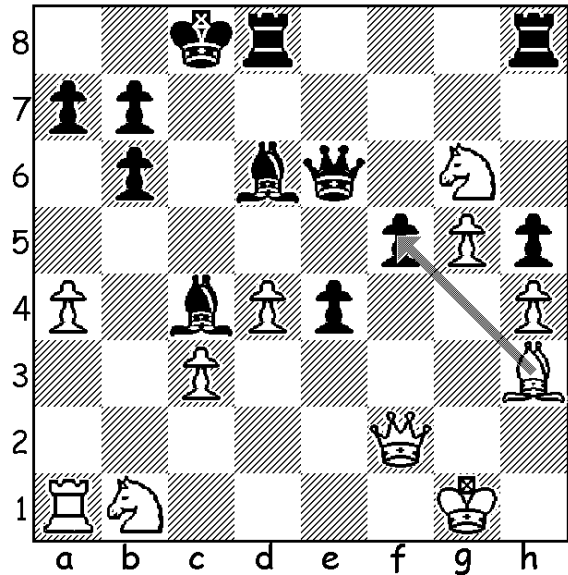
In this chapter, you'll need to create or use a pin to win material. There are two types of pins in chess: relative and absolute. A relative pin occurs when a piece is attacked, and if it moves, a piece of greater value will be under attack. An absolute pin occurs when a piece is pinned to the king and can't be moved out of the way or it would expose the king to attack.

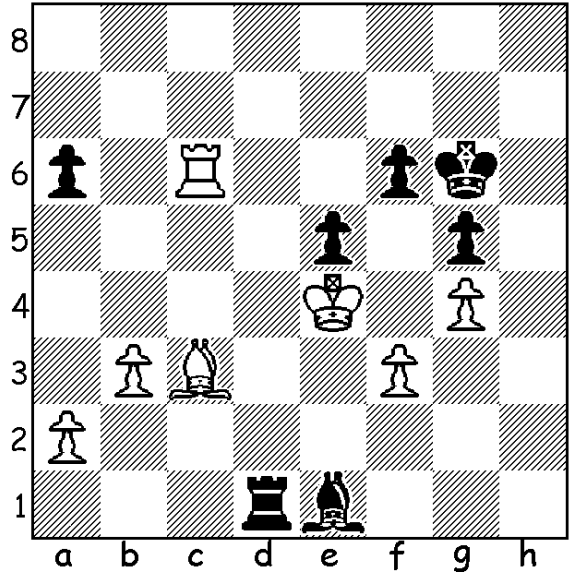
SAMPLE PUZZLE



White to Play

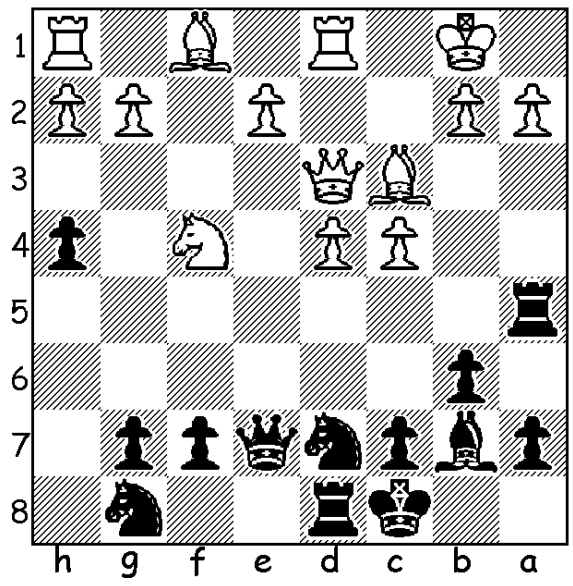
SAMPLE PUZZLE ANSWER





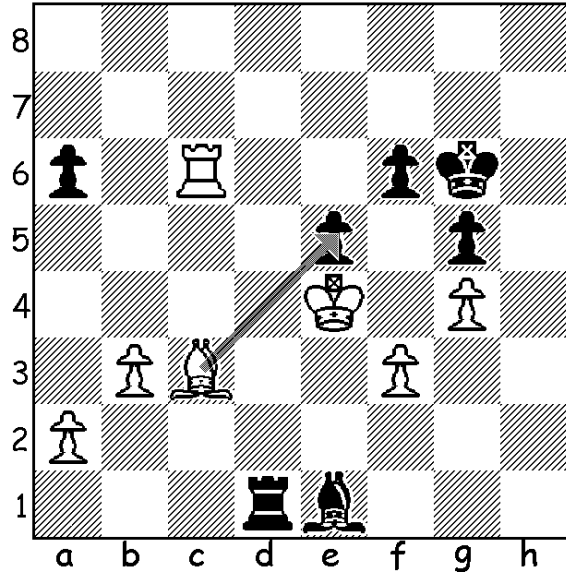
Puzzle #9 White to play

Write your answer _____



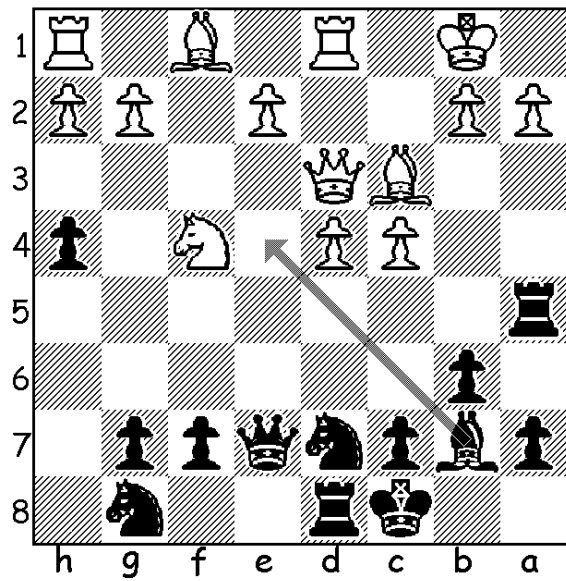
Puzzle #10 Black to play

Write your answer _____



Answer to Puzzle #9

Correct 1 point Incorrect 0 points



Answer to Puzzle #10

Correct 1 point Incorrect 0 points